

LOW PROFILE SCISSOR LIFTS

500 / 1,000 / 2,000 / 4,000 LBS

CAPACITY

- 500/1,000/2,000/4,000 lbs.

PLATFORM SIZES

- 24" wide x 48" long to 72" wide x 72" long

BASE SIZES

- 24" wide x 48" wide and x 48" wide x 48" wide

TRAVEL

- 29"

LOWERED HEIGHTS

- 4.3"

SAFETY

- Velocity fuses
- Pressure compensated flow divider

POWER SUPPLIES

- External A/C 110 volt power (standard)
- Hand or covered foot control

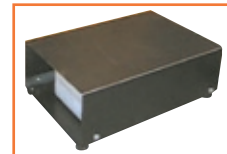
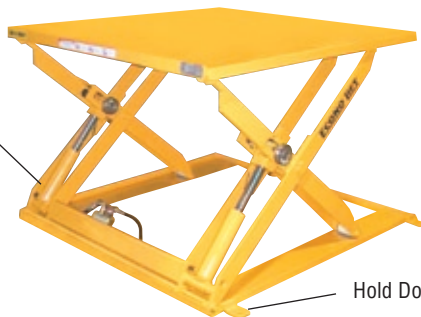
MAINTENANCE

- Hinged top for easy access
- Self lubricated bushings on all pivot points

OPTIONS

- Oversized platforms
- Rotating top
- Electric toe guards
- Safety tape switch
- Conveyors
- Bellow skirting

Heavy Duty Cylinders with Chrome Plated Rams and Polyurethane Seals



External Low Profile Power Pack (hand or foot control)

OPTIONS



LOADING RAMP attached to unit or available separately

SPECIFICATIONS - STANDARD WIDE BASE LIFT TABLES

MODEL NO.	CAPACITY (LBS.)	STD. PLAT. BASE (W X L) (IN.)	OVERSIZED PLATFORMS (UP TO) (IN.)	LOW HT (IN.)	TRAVEL (IN.)	TOTAL HEIGHT (IN.)	H.P.	VOLT/PH/HZ	SHIP WEIGHT
STANDARD 24" WIDE BASE LIFT TABLES									
LP29-5	500	24 x 48	48 x 72	4.3	29	33.3	1	110/1/60	325
LP29-10	1000	24 x 48	48 x 72	4.3	29	33.3	1	110/1/60	350
LP29-20	2000	24 x 48	48 x 72	4.3	29	33.3	1	110/1/60	550
LP29-40	4000	24 x 48	48 x 72	4.3	29	33.3	1	110/1/60	650
STANDARD 48" WIDE BASE LIFT TABLES									
4LP29-5	500	48 x 48	72 x 72	4.3	29	33.3	1	110/1/60	350
4LP29-10	1000	48 x 48	72 x 72	4.3	29	33.3	1	110/1/60	375
4LP29-20	2000	48 x 48	72 x 72	4.3	29	33.3	1	110/1/60	575
4LP29-40	4000	48 x 48	72 x 72	4.3	29	33.3	1	110/1/60	700